



Transport for NSW

# A guide to the Driving Test





# Introduction

Learner drivers must successfully complete a computer based Hazard Perception Test before attempting the driving test.

The driving test is an important step in gaining your driver licence. When you pass you will be issued with your provisional licence (P1) and will no longer need to keep a log book or have a supervising driver in the car with you. You will be free to continue learning and gaining valuable experience through driving on your own.

This booklet is a general guide about what is in the driving test. For specialised information on the test, read the Driving Test (Class C) Testing Officers Manual at [roads-maritime.transport.nsw.gov.au](http://roads-maritime.transport.nsw.gov.au) This booklet is not a book of road rules. See the Road User Handbook at [roads-maritime.transport.nsw.gov.au](http://roads-maritime.transport.nsw.gov.au) this covers the main road rules for driving on NSW roads. See the current and complete set of Road Rules at [legislation.nsw.gov.au](http://legislation.nsw.gov.au) The handbook is also available for a fee to purchase from a service centre or by calling 13 22 13 to order.

# Contents

<b>The driving test</b>	<b>3</b>
The way the test works	3
<b>Before you start</b>	<b>4</b>
Bribing people is against the law	4
Booking a test	4
A completed logbook	4
Taking the test	5
Your car must be roadworthy and ready to drive	5
Why a test can be cancelled	5
<b>Low risk driving</b>	<b>6</b>
<b>Observation</b>	<b>6</b>
Scanning	6
Checking blind spots	7
<b>Speed management</b>	<b>9</b>
Maintain space to the front	9
Maintain space when stopped	10
Reduce speed	11
<b>Road positioning</b>	<b>12</b>
Buffering	12
Turns at intersections	13
Manoeuvres	17
<b>Decision making</b>	<b>20</b>
Affecting the crash avoidance space of others	20
Situations with limited vision	21
<b>Responding to hazards</b>	<b>22</b>
Hazard and response	22
<b>Vehicle control</b>	<b>26</b>
Operating the controls	26
Driving posture	27
<b>Test results</b>	<b>28</b>
Why you might fail	28
Immediate fail	32
Test termination	33
What happens after the test?	35
Test score sheet	36
<b>Tips for new provisional drivers</b>	<b>38</b>
Night driving	38
Passenger influences	38
Driving distractions	38
Licence restrictions for P1 licences	39
Licence restrictions for P2 licences	40

# The driving test

This guide explains what you need to do before taking a test, what you will be tested on, and what happens afterwards.

## The way the test works

The driving test follows a set course comprising 25 zones. During the test a testing officer will be in the car with you directing you where to drive, and recording your performance on a score sheet. Your score will be based on your driving performance in a range of situations and your ability to demonstrate low risk behaviours. You are assessed against five key performance areas: speed management (S); road positioning (P); decision making (D); responding to hazards (H) and vehicle control (C).

Assessments							NOTES
S	P	D	Z	H	R	C	
✓	✓	○	1	—	—	✓	H
✓	✓	✓	2	✓	○	✓	
✓	✓	✓	3	✓	✓	○	S

No hazards present in the zone  
 Observation error  
 A tick, requirement demonstrated  
 Signal error  
 Hazard present in the zone  
 A circle, requirement not demonstrated

Some driving behaviour such as breaking a road rule or following other vehicles too closely is considered to be 'high risk'. If you behave this way during the test your actions will be recorded as FAIL items and you will not pass, regardless of your score.

A detailed explanation of scoring codes is located on the back of the driving test score sheet.

See Section 5 of this guide for a complete list of fail items. To pass the driving test you must achieve a score of 90 per cent with no fail items.

In all the diagrams in this handbook you are always the blue car, marked A.



# Before you start

Learner drivers **must** have successfully completed a computer based Hazard Perception Test (HPT) before attempting the driving test. The HPT is only valid for 15 months. If it has been more than 15 months since you passed the HPT you will need to do the test again before you can do the driving test.

## Bribing people is against the law

---

It is illegal to offer, request or accept gifts, rewards, money or other favours in order to get a licence without passing the required tests. Penalties are severe and include fines and imprisonment. All cases of corruption will be investigated and strong action will be taken against all those involved.

The only licence fees and charges you have to pay are set by Transport for NSW. Do not pay any more or offer to pay more to get your licence.

If you know or believe that someone has got or is about to get a NSW licence by offering or responding to a request for a bribe – or if you suspect or know of any other corruption involving a NSW Government employee – telephone Transport for NSW on 1800 043 642 (free call) or the Independent Commission Against Corruption (ICAC) on (02) 8281 5999.

To avoid a misunderstanding make sure all money and valuables in your vehicle are locked away or out of sight.

To avoid misunderstanding make sure all money and valuables in your vehicle are locked away or out of sight.

## Booking a test

---

When you are ready to take the driving test, you need to book and pay:

- Online at [service.nsw.gov.au](http://service.nsw.gov.au)
- By calling Service NSW on 13 22 13.
- Visiting a service centre in your area.

If you want to change or cancel your booking, you can. This must be done at least 24 hours before the test date or your fee will not be transferred or refunded.

## A completed logbook

---

Before you can take a driving test you must have:

- The required amount of driving experience recorded in either your *Learner Driver log book* or Digital Learner Driver log book app.
- ‘The Declaration of Completion’ signed by your supervising driver in your *Learner Driver log book* or electronically send your hours using the submit button in the app.

## Taking the test

---

When you go to the testing centre for the driving test, you must have a person with you who has a full driver licence. If you fail the test you cannot drive away on your own and will need a licensed driver to be with you.

Plan to arrive at the testing centre in good time for your appointment. If you have a *Learner Driver log book* and booking confirmation slip give it to the person at the counter. If you have used the digital *Learner Driver log book app* your hours must be submitted before booking your test, so you only need to give the booking confirmation slip to the person at the counter. You will be referred to a testing officer.

The testing officer will ask you to sign the score sheet. Remember to ask any questions before you start. The testing officer cannot tell you how to drive or coach you during the test as it is an assessment of your ability to drive on your own.

A monitoring officer may sit in on your test. The monitoring officer's job is to watch the testing officer and make sure that the test is conducted properly. Nobody other than the testing officer and monitoring officer is allowed to be in the vehicle with you during the test.

Try to relax. You will not be expected to drive as skilfully as an experienced driver. Remember, you can try again if you fail. However, you must wait a minimum of seven days before you may reattempt the Driving Test.

After the test, the testing officer will review your performance if you wish. Testing officers will provide general comments rather than discuss specific situations or events. If you fail you will receive a driving test record that shows the areas where you need to improve.

## Your car must be suitable for safe use and ready to drive

---

Before the test starts the testing officer will check to make sure that your car is suitable for safe use. See the checklist in Section 5 Test results.

## Why a test can be cancelled

---

If there is any suspicion that you have recently taken alcohol or another drug, the test will be cancelled and there will be no refund of the test booking fee. If you offer money, some other bribe, or try to influence the testing officer, the test will be stopped and you may be taken to a police station and charged with offering a bribe.

# Low risk driving

Driving is never risk free, but you should aim to drive 'low risk'. You will be assessed on your low risk driving skills in speed management, road positioning and decision making. The test also assesses your ability to perceive and respond to hazards.

## Observation

Observation is an essential skill for a low risk driver. The testing officer will be assessing your observation techniques throughout the test. You will fail if your observation is poor.

## Scanning

---

Scanning is keeping your eyes moving, checking in one area for no more than a couple of seconds and then moving your eyes to another area.

Low risk drivers constantly scan traffic conditions.

When driving around corners turn your head and look through the corner scanning the road ahead of your vehicle.

Slow down if vision of the road ahead is limited.

You will be expected to make regular checks in your rear vision mirror so you know what is happening behind you. You must check your rear vision mirror before you slow down or change direction.

When scanning look:

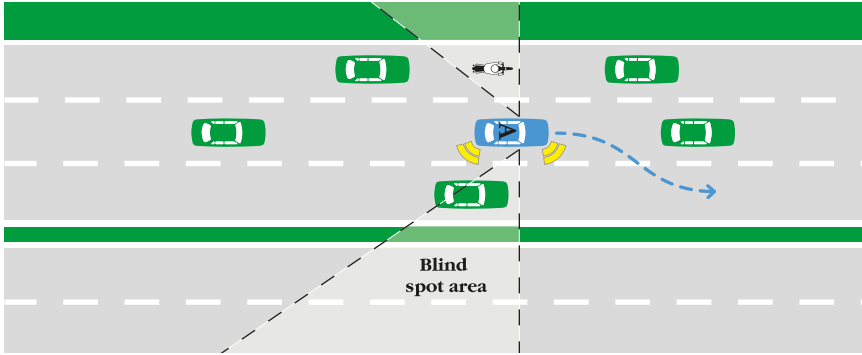
- In the distance.
- At the road surface.
- To the left and right.
- In your mirrors.
- At the instruments and gauges.

Before proceeding through traffic lights, you must turn your head and check to ensure there are no vehicles that may be 'running' the red light, or pedestrians crossing against the 'don't walk' sign. You must also turn your head and check to ensure it is safe before proceeding across a railway level crossing.

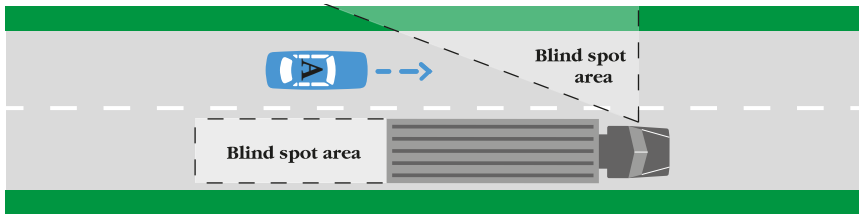


## Checking blind spots

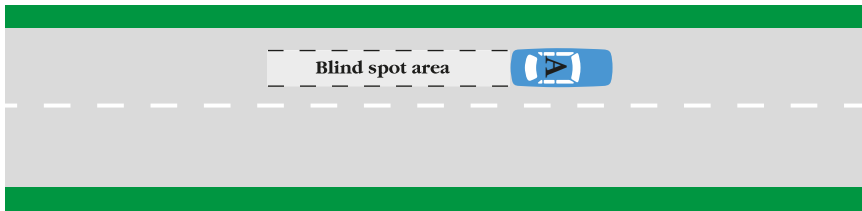
A car, motorcycle or bicycle in an adjacent lane can easily be positioned beyond the area visible in the mirrors. Checking your blind spots is an essential observation skill as many crashes occur because drivers do not turn their head and look over their shoulder before steering. Frequently not performing observation checks will result in a fail.



Check blind spots before changing your road position.



Do not drive in the blind spot of other vehicles.

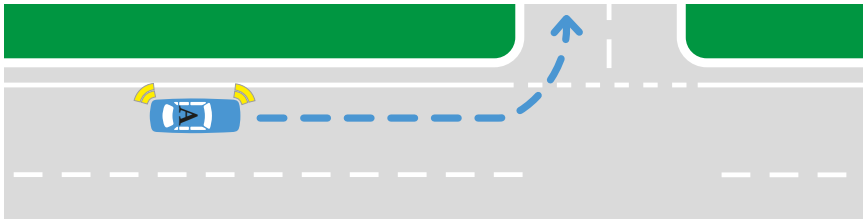


All vehicles have a large blind spot behind them. Because of this blind spot, extra care must be taken when reversing as small children can be out of view.

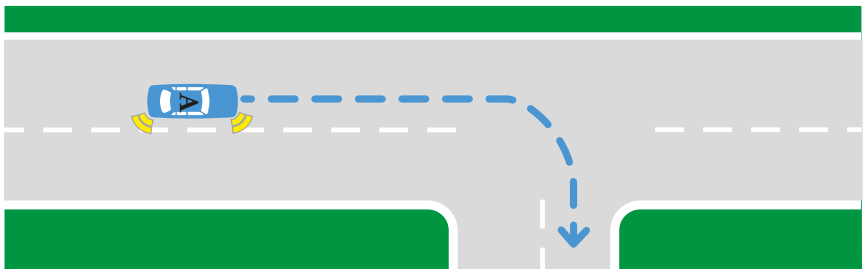
You must turn your head and check your blind spots before:

- Changing lanes.
- Leaving or returning to the kerb.
- Merging or diverging.
- Reversing.
- Turning left – looking for pedestrians, bicycles and motorcycles that could be beside you in your blind spot.
- Turning right – looking for vehicles that may be overtaking you.
- Joining the traffic stream.
- Leaving the inside lane of a multi lane roundabout.

When reversing you must turn your head and look over your shoulder to check through the rear window for vehicles and pedestrians that may not be visible in your mirror. All vehicles have blind spots behind.



**Before turning left you must check for bicycles and other vehicles that could be in your blind spots.**



**Before turning into a street or driveway you must have a head check for vehicles that may be overtaking you.**

Observation errors are recorded on the Driving Test score sheet as a circle around 'D' (decision) and an 'H' in the notes column.

# Speed management

You must drive at a safe and legal speed, managing your speed to suit traffic, weather and road conditions.

## Maintain space to the front

You must adjust your speed to maintain crash avoidance space to the front of your car.

The minimum safe distance needed in front is three seconds. This must be increased in poor conditions, or when you are being followed too closely by another vehicle.

When you change lanes or if another vehicle moves into your three-second gap, you will be expected to create a new gap by gradually dropping back.

To calculate a three-second crash avoidance space when following another vehicle use this basic technique: as the rear of the vehicle in front of you passes a stationary object at the side of the road such as a power pole, tree or sign, start a three-second count 'one thousand and one, one thousand and two, one thousand and three'.



You must stay at least 3 secs behind the vehicle ahead.

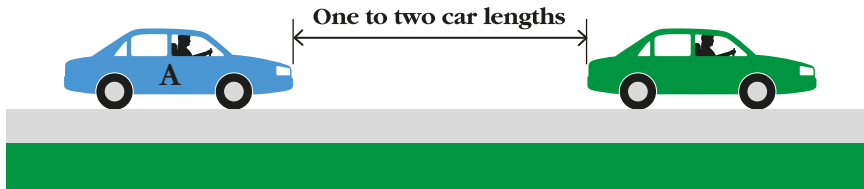


You must increase this distance in poor conditions (rain etc).

If your car passes the object you picked before you finish the three-second count, you are following too closely. Your crash avoidance space is not large enough. Slow down, and repeat the count again until the three-second crash avoidance space is achieved.

## Maintain space when stopped

When you are stopped in traffic you must keep one to two car lengths from the vehicle in front to reduce the risk of colliding with it if you are hit from behind. You may move forward to within one metre once other vehicles are stopped behind you and the risk of being hit from behind is reduced.



Leave one to two car lengths in front when stopped.

When you come to a stop sign you must stop completely before reaching the stop line, and as close as possible to the line.

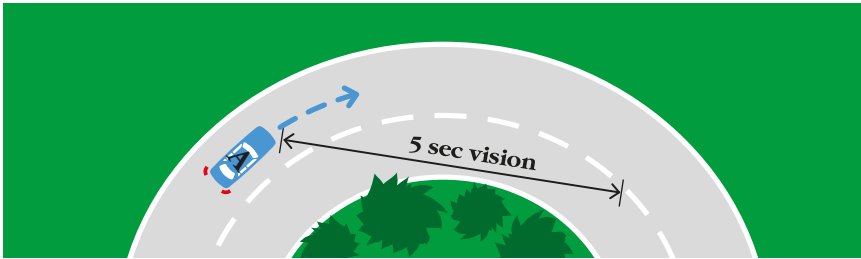
## Reduce speed

---

You must slow down if you do not have a clear view of the road ahead. Situations where your vision may be reduced include: blind corners; blocked intersections; crests and poor weather conditions.

Slow down if you cannot see five seconds ahead.

To calculate five-second vision in a curve, pick a fixed point in the oncoming lane that has just come into view and start a count 'one thousand and one, one thousand and two... one thousand and five'. If you reach the point before five seconds you are driving too fast for the available vision.



**Slow down if you cannot see 5 secs ahead.**

You must also slow down in situations where space to the side of your vehicle is limited.

For traffic calming devices, such as speed humps or chicanes, slow down enough to ensure there is no undue jolt or sideways roll of your vehicle.

# Road positioning

During the test you will be expected to maintain a safe, legal position on the road. This includes during manoeuvres such as a three-point turn and reverse parking.

## Buffering

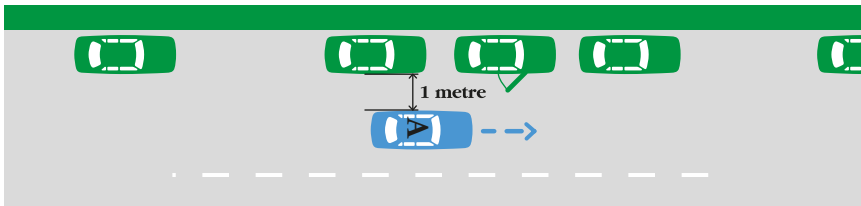
Buffering is keeping as much space to the sides of your vehicle as practical in any situation. You should have at least one metre from other vehicles and hazards.

Where you are not able to keep space from other vehicles and hazards you must slow down.

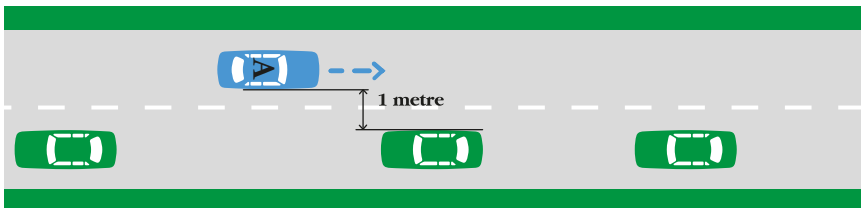
You are also expected to change your position on the road to create space from hazards. On crests and curves, slow down and move away from oncoming traffic. When possible, you should be at least one metre from the centreline on blind crests and curves.

In multi-laned traffic, avoid driving in the blind spot of other drivers and in the high risk area beside other vehicles.

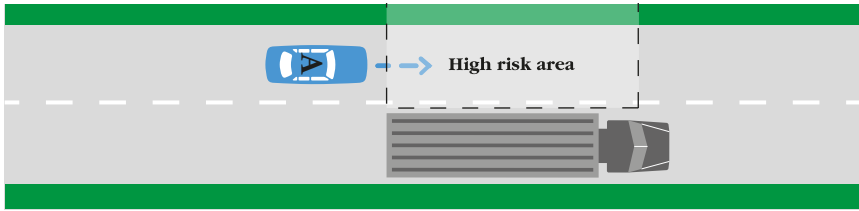
If you unnecessarily drive on the wrong side of the road, or unnecessarily cross any edge lines or lane markings, you will fail.



You must allow space for parked cars to open doors.



You must allow clearance from oncoming traffic.



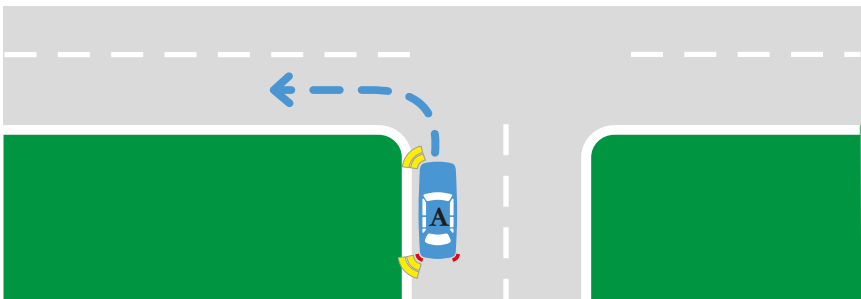
**Avoid driving in the high risk area beside other vehicles.**

To reduce the risk of head-on crashes on multi-lane roads, only drive in the right lane when overtaking or planning to turn right.

## Turns at intersections

Your position in making turns is important to ensure a smooth and safe flow of traffic.

When turning left on unmarked roads you must approach as far left as practical. When turning left on laned roads, you must approach in the left lane, or any marked left turn lane.

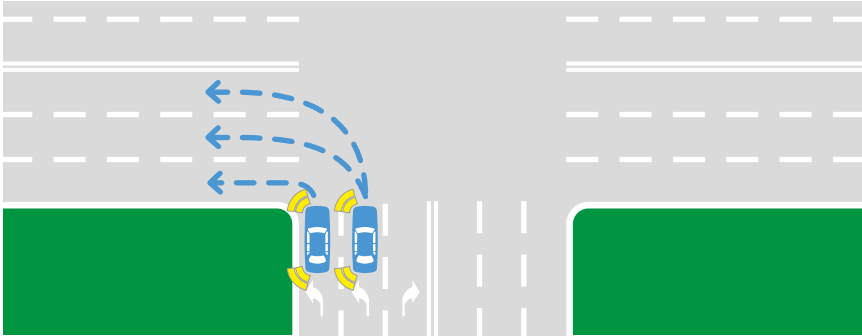


**Approach left turns as far left as you can.**

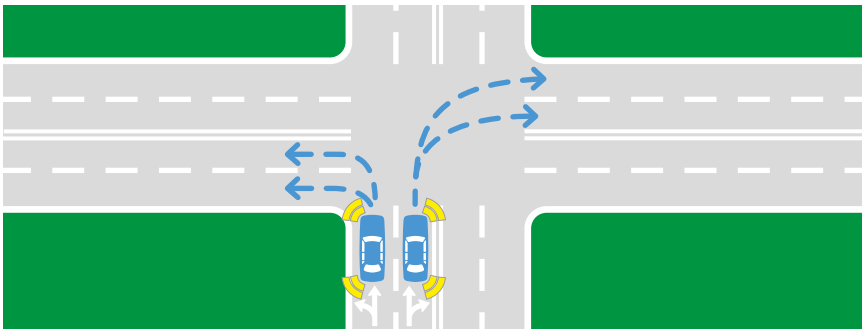
As you finish a left turn, exit into the lane or part of the road that is best for the traffic conditions. Your choice will depend on where you are going next, whether cars are parked in the left lane, or whether outside lanes must be left clear for overtaking.

However, when there are multiple turning lanes, you must finish in a permissible lane.

You will fail if you exit in an incorrect lane.



When there are multiple turning lanes, you must finish in a permissible lane.

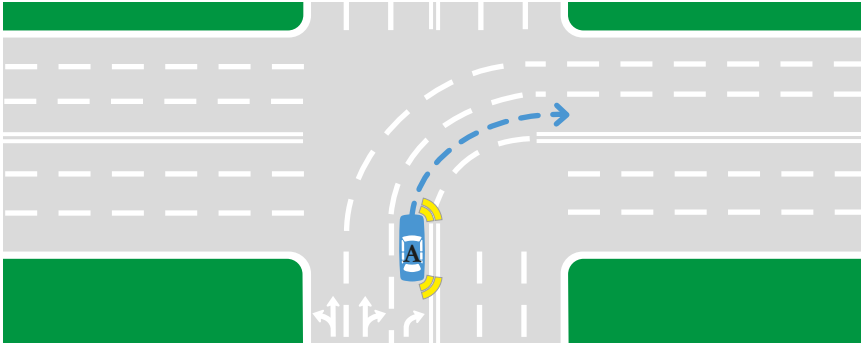


You can turn into either lane, depending on traffic.

You must keep your steering straight while waiting to turn right, to protect you from being pushed into the oncoming traffic if hit from behind.



When turning right on unmarked roads you must keep to the left of, but as close as practical to the centre of the road. When turning right on laned roads you must approach in the right lane or any marked right turn lanes.



**In marked lanes stay in the same lane.**

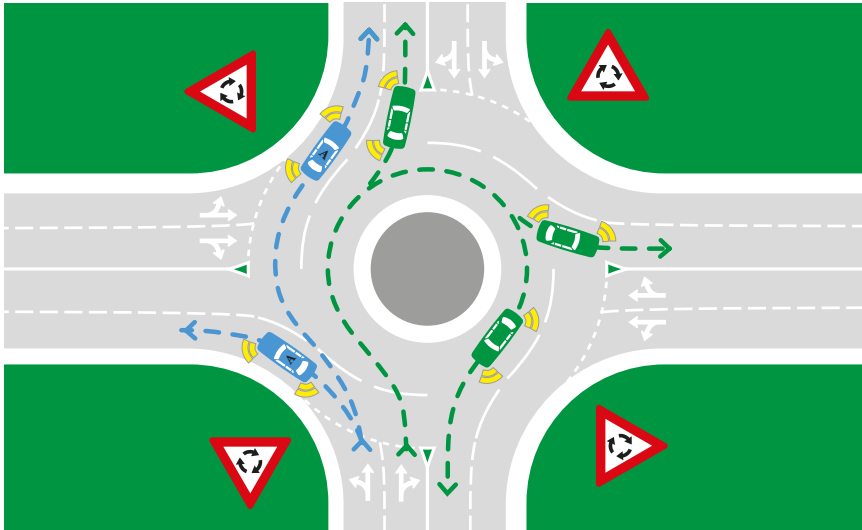
In marked lanes you must stay in the same lane as you go from one road to another.



**Turning vehicles pass in front of each other.**

When turning right, steer to the right of an imaginary centre of the intersection. This allows vehicles opposite you to also turn right. As you exit, you must keep to the left of the centre of the road.

When turning right into a one-way street, approach and exit as close as possible to the right side of the road.



**Indicate left when leaving the roundabout.**

On multi-laned roundabouts position your vehicle in accordance with the road markings for the direction you intend to travel. You must exit in a permissible lane.

**Approaching a roundabout:** Vehicles entering a roundabout must give way to any vehicle already in the roundabout.

**Exiting a roundabout:** If practical, you must always signal left when exiting a roundabout

You must check your blind spot before crossing lanes within a roundabout when exiting.

## Manoeuvres

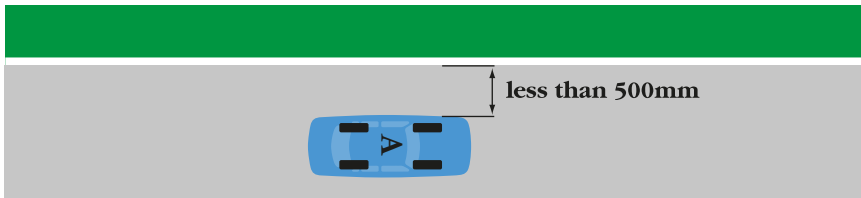
On the driving test you will be asked to do a number of manoeuvres that will be selected from the following:

- A kerb side stop.
- A hill start.
- A three-point turn.
- Parking, reverse parallel, 90 degree or 45 degree, front or rear to kerb (type depending on local availability).

During the manoeuvres you will be assessed on your ability to position your vehicle legally, safely and accurately:

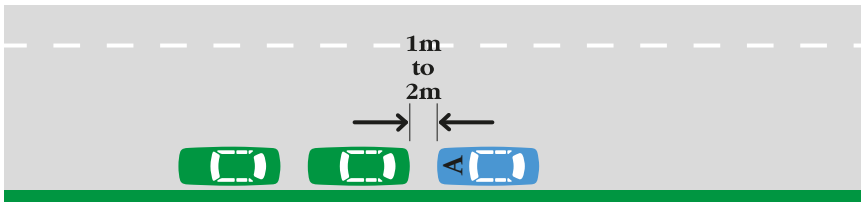
You must:

- Park close and as near as practical to the kerb.  
(The test requires you to be less than 500 millimetres from the kerb.)



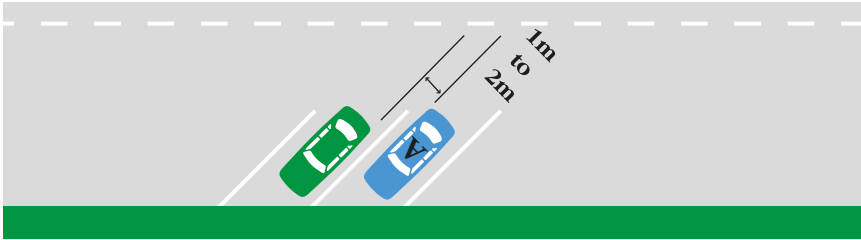
The vehicle should be parallel and closer than 500mm to the kerb.  
The wheels must not touch the kerb.

- Stay at least one metre away from other vehicles.  
(The test requires you to be no more than two metres from other vehicles when you park.)



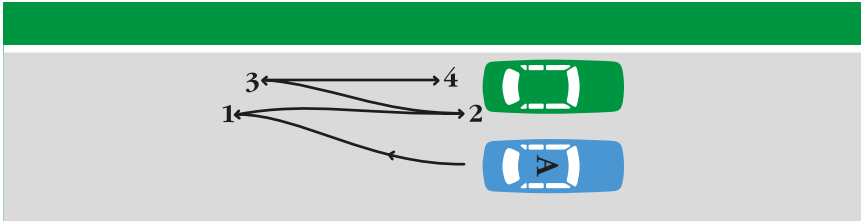
You must make sure the vehicle is at least 1m from other vehicles.

- Reverse only as far as you need (if you reverse more than seven metres back from the rear of the vehicle you are parking behind, you will fail).
- Where possible, finish as close as practical to the angle required for that parking area and within any marked lines.



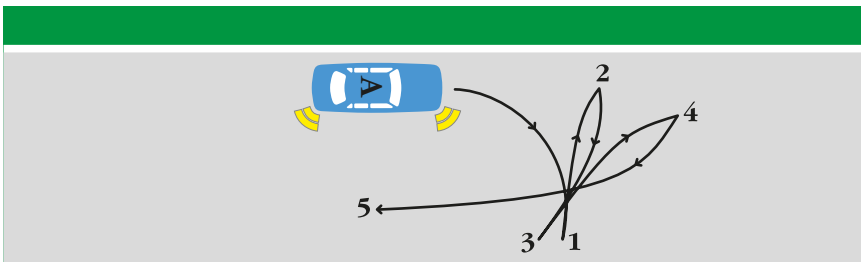
Park at required angle and within any marked lines.

- Use effective steering. (The test allows a maximum of four direction changes for all parking manoeuvres.)



Park using a maximum of 4 direction changes.

- During the three-point turn you must check left and right for traffic before each movement.



Turn around using a maximum of 5 direction changes. If it is possible to complete the manoeuvre in three changes of direction you will be expected to achieve this.

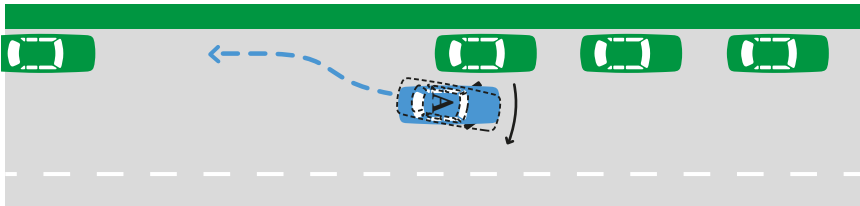
Mounting the kerb at anytime during the test will result in a fail.

### OBSERVATION CHECKS DURING MANOEUVRES

During manoeuvres you must check for other vehicles, pedestrians and possible hazards.

You must turn your head and check your blind spot before you:

- Move to the kerb to commence the manoeuvre.
- Leave the kerb to rejoin the traffic.
- Steer, if during reversing the front of your vehicle will swing into the lane.



**You must check your blind spot before the front of your vehicle swings into the lane beside you.**

While reversing you must check in the direction of travel. This includes checking the mirrors and through the rear and side windows.

You may use reversing cameras and sensors to aid reversing. However, you must also check your mirrors and the area around your vehicle.

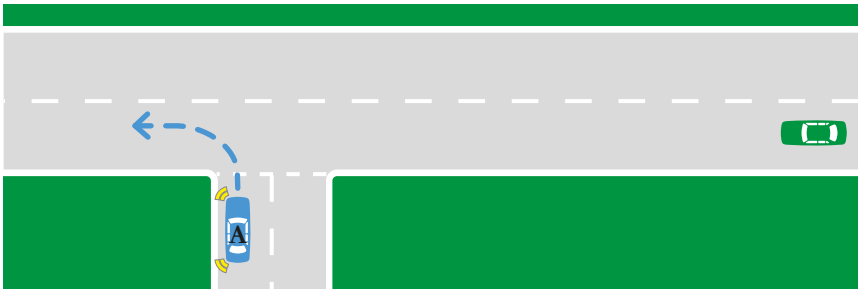
If your vehicle has a park assist device, this must be switched off for the reversing manoeuvres.

# Decision making

A critical decision must be made whenever you enter traffic, change lanes, cross or turn at an intersection.

## Affecting the crash avoidance space of others

The testing officer will be checking that you go only when there is a safe gap in the traffic and that you are not affecting the crash avoidance space of other drivers.

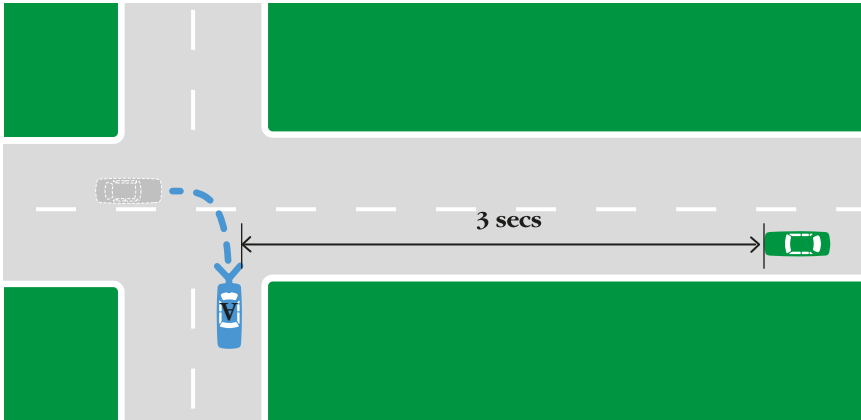


**Choose a safe gap so other vehicles are not forced to change speed.**

A safe gap ensures that other vehicles do not need to change their speed or position. When turning across traffic make sure your vehicle is clear of the intersection by at least three seconds before the approaching vehicles arrive. When joining a traffic stream select a gap that allows you to reach the traffic speed before the approaching vehicles are within three seconds of your car.

You must signal for at least five seconds before leaving the kerb or a parked position.

During the test you will be expected to demonstrate smooth, flowing decision making. If you reject safe gaps or unduly stop at intersections when it is clearly safe to proceed, you may fail.



**Be clear of the intersection for 3 secs before other vehicles arrive.**

When approaching traffic lights that are green, check your mirrors and be prepared to stop.

You must stop at a yellow light, unless sudden braking might cause a crash.

## Situations with limited vision

At some intersections your vision may be affected by other vehicles, trees or buildings. In these situations you must demonstrate caution when proceeding. If you proceed into an intersection without due care, you may fail.

After stopping correctly at a 'stop line' you may move forward into an intersection to improve your vision, provided you do so safely and do not affect other vehicles or pedestrians.

# Responding to hazards

Your hazard perception skills are essential to low risk driving. During the test you will be assessed on your ability to recognise hazards and make an appropriate response.

## Hazard and response

---

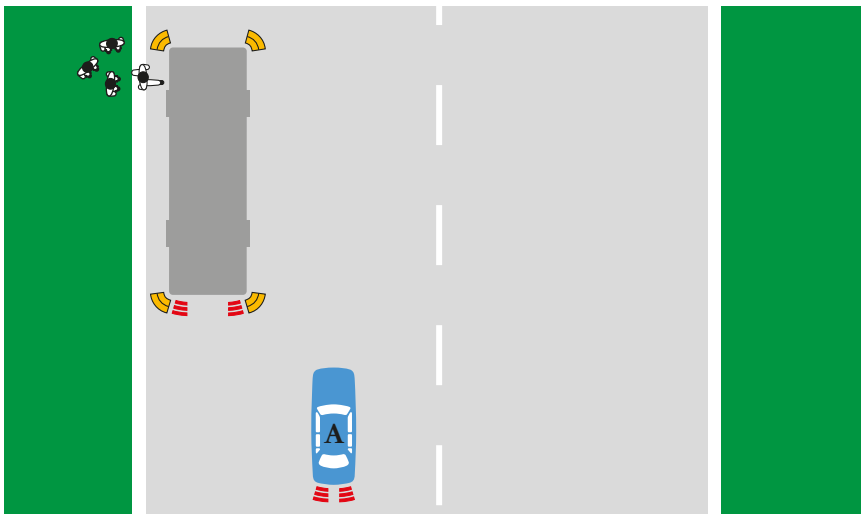
During your test you must respond appropriately to hazards.

As you scan the traffic environment you should be asking yourself whether the things you see could possibly enter your crash avoidance space.

If the answer is yes and something could block your path, your response should be to protect your crash avoidance space by:

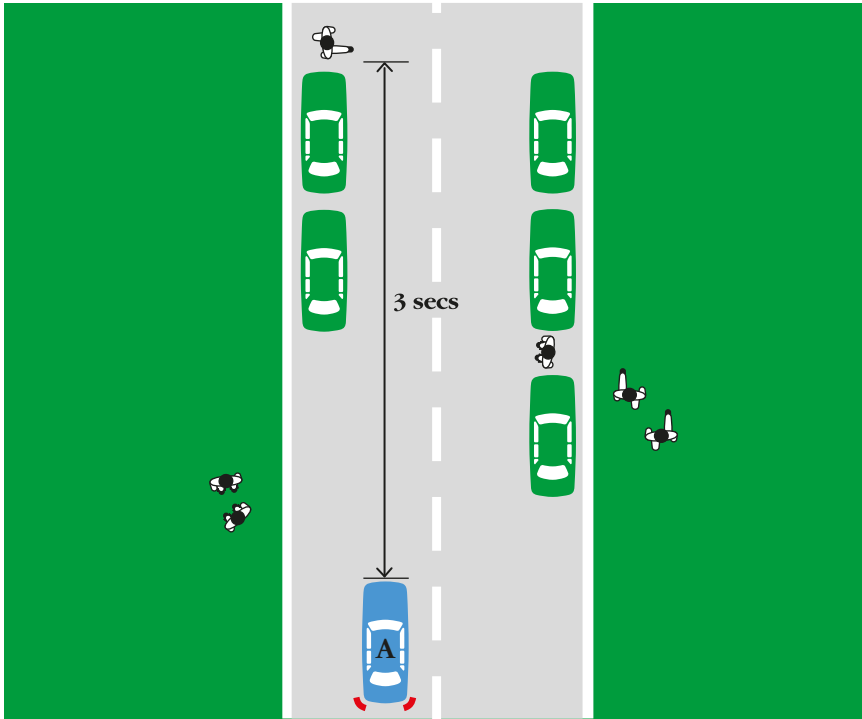
- ‘Setting up’ or covering the brakes.
- Easing off the accelerator.
- Reducing speed.
- Creating a ‘buffer’ from the hazard by changing your position on the road or changing lanes.

Your ability to respond means that you are better able to deal with any dangerous situation that might occur.

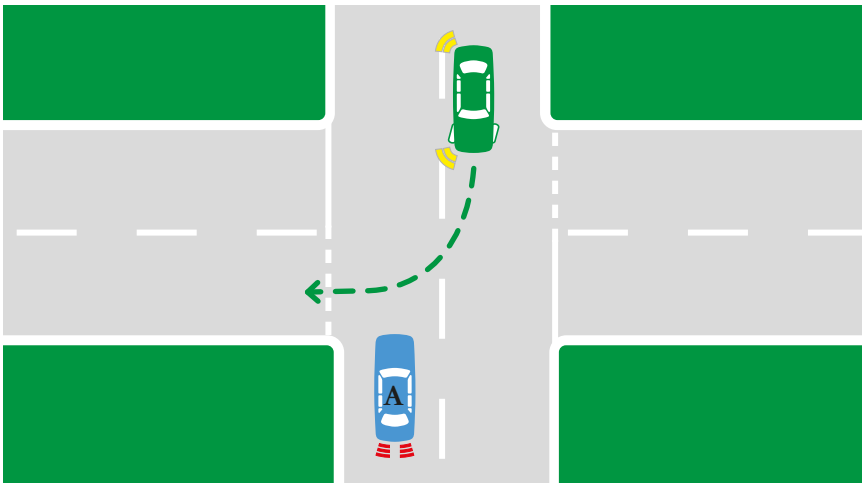


**Respond when something can enter your crash avoidance space.**

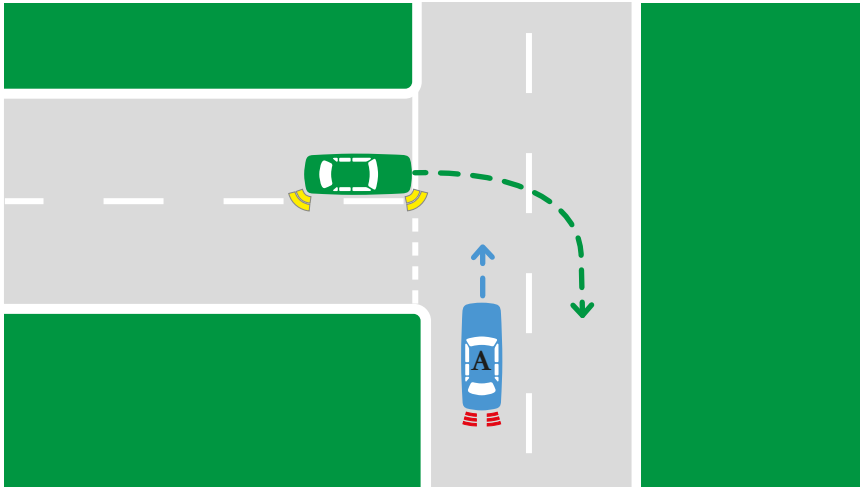




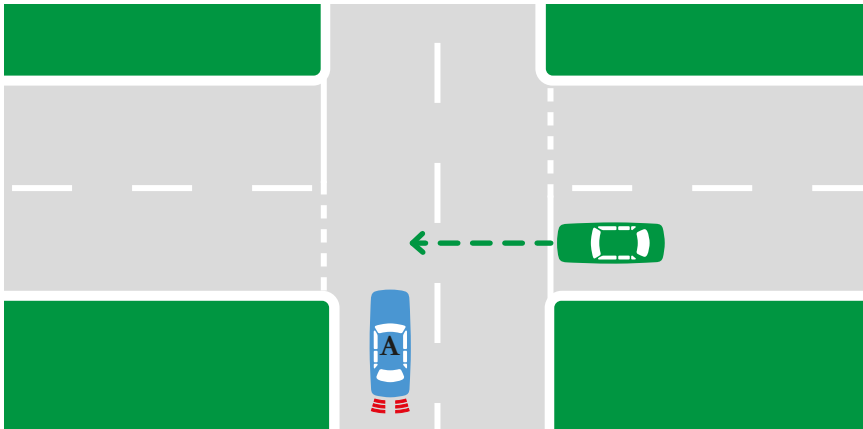
Respond before reaching the hazard.



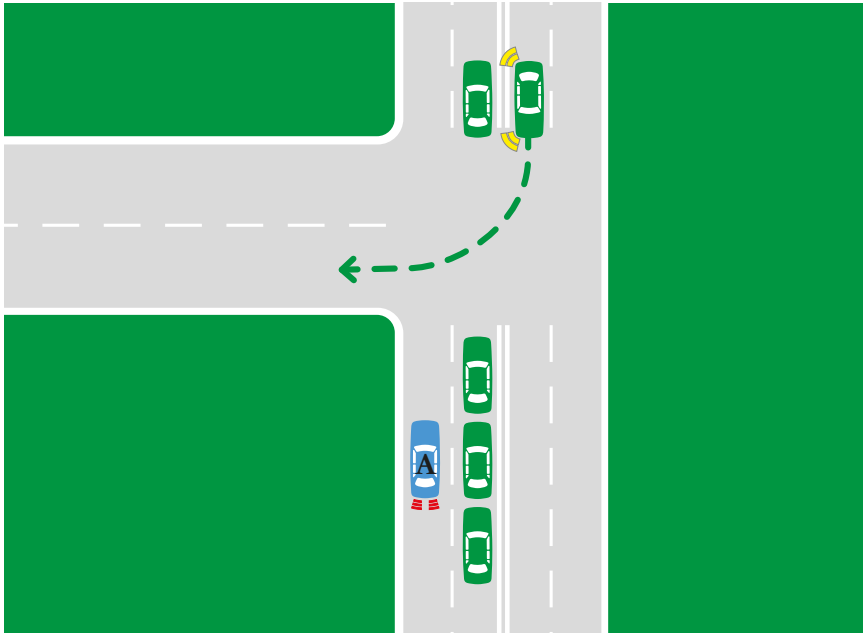
A vehicle waiting to turn in front of your path.



A vehicle waiting to pull out from the left side.



A vehicle waiting to pull out from the right side.



Stopped traffic obscuring vision at an intersection.

# Vehicle control

Your ability to control the vehicle is assessed by the way you handle the tasks involved.

## Operating the controls

---

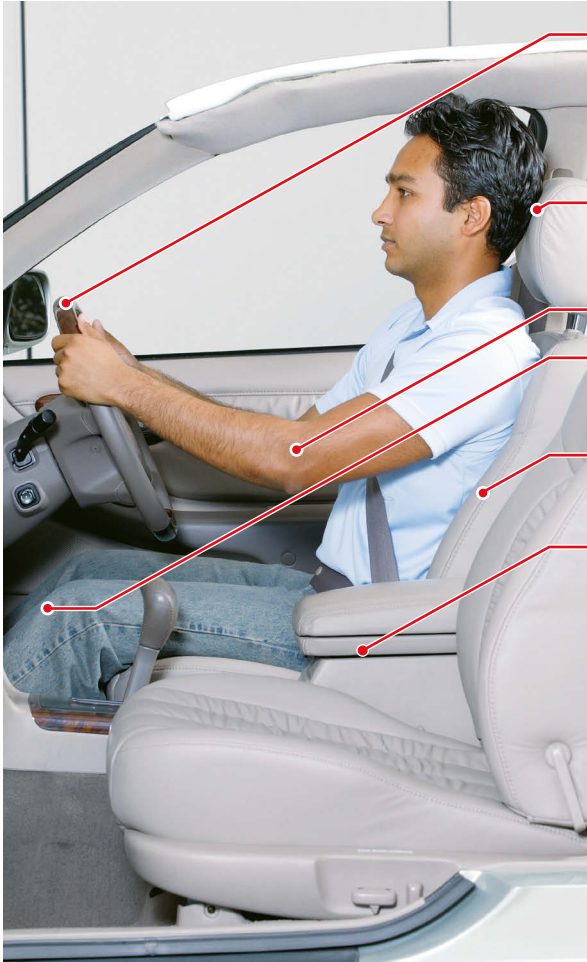
Some of the driving tasks that the testing officer will observe and record are listed here:

- Adjust driver's seat posture and steering column (if adjustable) to ensure you have good control of the vehicle.
- Operate accelerator smoothly when accelerating and decelerating.
- Operate brakes smoothly and effectively.
- Coordinate clutch and gear lever to make smooth gear changes.
- Select appropriate gear for the situation including when coming to a stop and parking the car.
- Avoid over-revving on take off and gear changes.
- Driver's seat belt is correctly fastened, fitted and adjusted (low, flat and firm).
- Apply a brake when starting the vehicle.
- Prevent rolling back when starting on hills.
- Use park brake correctly when preparing to secure the vehicle and ensure it is fully released when driving.
- Steer with both hands on the steering wheel (except when using another control), using either 'hand-over-hand' or 'pull-push' method with hands on the outside of the steering wheel.
- Use other controls such as indicators, windscreen wipers and demisters.

You must be confident in your use of all controls and be able to operate them without being distracted.

You should apply the eco driving techniques that are outlined in the Road User Handbook. Any harsh accelerating or braking will effect your score.

## Driving posture



The steering wheel should be adjusted low, facing the driver's chest rather than the face.

Adjust the head restraint for your height. See owner's manual.

Keep your arms bent; thumbs should be on the rim of the steering wheel.

Keep your knees slightly bent.

Have the seat fairly upright to fully support your back and shoulders.

Sit deep in the seat.

Brace your body using your left foot.



# Test results

## Why you might fail

---

This guide shows examples of what you must do to drive safely and pass the test. However, some actions and behaviours are classed as fail items. If you do something that gets a fail, your test will continue so that you can be given a full assessment of your driving ability but you will not pass the test.

Here is a list of all the fail items along with some examples of how they may happen on a driving test.

Remember that this is only a guide and if you have any more questions you should see the Road User Handbook at [roads-maritime.transport.nsw.gov.au](http://roads-maritime.transport.nsw.gov.au) or purchase the handbook from a service centre.

### 1. DISOBEYING TRAFFIC SIGNS, SIGNALS OR ROAD MARKINGS

Be sure you have a thorough understanding of the meaning of regulatory signs, traffic signals and road markings. They tell you what road rules apply in any specific situation. Examples of this fail item include:

- Not stopping at a red traffic light.  
This means that all of your vehicle must be behind the stop line.
- Not stopping at a yellow traffic light when it is safe to do so.  
You must stop at a yellow light unless sudden braking might cause a crash.
- Not stopping correctly at a stop line.  
Your final stopped position must be within one metre of the stop line and with no part of your car over the line.
- Crossing a continuous centre line, lane line or edge line unnecessarily.
- Disobeying lane markings (transit lane, turn arrows etc).
- Not obeying regulatory signs such as One Way, No Entry, No U-Turn, Keep Clear and Keep Left.

## **2. FAILING TO GIVE WAY WHEN NECESSARY**

Examples of this fail item include:

- Not giving way to any vehicle that has priority over you at an intersection.
- Not giving way to pedestrians at marked crossings and intersections.
- Not giving way if required when entering a traffic stream, merging or lane changing.

## **3. COLLIDING WITH A VEHICLE, PEDESTRIAN OR OBJECT**

This includes mounting or straddling (one wheel either side of) a traffic dome and mounting the kerb or roundabout.

You will not fail if you touch the kerb face with your wheels.

## **4. PERFORMING AN ILLEGAL ACT OR MANOEUVRE**

An illegal act or manoeuvre is anything contrary to the *Road Rules* where a regulatory traffic sign, signal or road marking is not present. Examples of this fail item include:

- Unnecessarily driving on the wrong side of the road on unmarked roads.
- Turning from the incorrect position. For example, starting a left turn from the right lane, or
- When turning left or right in an arrowed lane, you do not exit to a permissible lane.
- Stopping on a pedestrian crossing or stop line when giving way to pedestrians.
- Not driving in the left lane when required to do so.
- Making an unlawful U-Turn.
- Not using the correct lane to turn at a roundabout.
- Overtaking or passing a stationary vehicle at a pedestrian crossing.
- Entering a level crossing when unsafe to do so.
- Not wearing a seatbelt.
- Answering or using a mobile phone.

## **5. EXCEEDING THE SPEED LIMIT**

The speed limit is the maximum allowable speed for that section of road under normal conditions. Exceeding the speed limit is dangerous and illegal. You will fail if you exceed the speed limit at any time including:

- The 40 kilometre per hour limit at school zones during the hours of operation.
- The 40 kilometre per hour limit when passing a bus with flashing lights.
- The learner driver speed limit.
- Speed limits at road works.

## **6. ACTION REQUIRING TESTING OFFICER INTERVENTION**

At this stage of your driving experience you should be able to drive without any help. If the testing officer has to give you verbal or physical assistance, including using the dual controls in an instructor's vehicle, you will fail.

## **7. CAUSING A DANGEROUS SITUATION**

This fail item covers any unsafe act or behaviour that puts you or others at risk, such as overtaking in an unsafe manner, or giving way unnecessarily.

## **8. FAILING TO MAINTAIN PROPER CONTROL OF THE VEHICLE**

This fail item applies to anything that could, or does, result in you losing control of the vehicle such as:

- Allowing the vehicle to roll back more than 500mm when moving off.
- Skidding or spinning the drive wheels.
- Clutch coasting (allowing the vehicle to roll along with your foot on the clutch) or coasting in neutral.
- Not maintaining effective control of the steering wheel.

## **9. FAILING TO EXERCISE DUE CARE TO AVOID AN ACCIDENT**

You must be ready at all times to respond to hazards. If a situation occurs requiring your response and you are not prepared, you will fail.

## **10. FAILING TO GIVE WAY TO AN EMERGENCY VEHICLE**

You will fail if you do not move out of the way of an emergency vehicle.

## **11. DISOBEYING DIRECTIONS FROM A PERSON CONTROLLING TRAFFIC**

This item includes failure to obey police, emergency services or armed forces personnel, traffic controllers (eg flag persons at road works) and pilot vehicles etc.



## **12. FREQUENTLY NOT SIGNALLING INTENTION**

You will fail if you repeatedly do not signal when legally required to do so. You must signal:

- To give sufficient warning to other road users of your intentions when turning left or right.
- For at least five seconds before leaving the kerb.
- For at least five seconds before leaving a parking space.
- When changing lanes, diverging or pulling over to the kerb.
- When exiting a roundabout.

## **13. REFUSING TO ATTEMPT ANY PART OF THE TEST**

You are required to complete the whole test to get a pass. You can be failed for refusing to do any part of the test.

## **14. REPEATED OR DELIBERATE FAILURE TO FOLLOW DIRECTIONS**

You must follow all reasonable directions given to you by the testing officer during the test.

## **15. UNREASONABLY OBSTRUCTING OTHER VEHICLES OR PEDESTRIANS**

You will fail if you unreasonably obstruct other vehicles or pedestrians during the test. This includes if you:

- Enter an intersection without enough space on the other side due to traffic, blocking the intersection as a result.
- Drive significantly below the speed limit when prevailing conditions do not require it.

## **16. RECEIVING EXTERNAL ADVICE OR INSTRUCTION DURING THE TEST**

You will fail if you receive any external advice from a third party at any time during the test. This includes the time from when you sign the score sheet, to getting into your vehicle.

### **Final position at a stop line**

If initially you stop more than one metre from the line you must move up and stop within one metre of the stop line, with no part of the vehicle over the line.

## **17. NOT PARKING TO THE REQUIRED STANDARD**

During the manoeuvres you will fail if:

- The final position of your car is more than one metre from the kerb or obstructing traffic.
- Your wheels are on or over marked parking lines.
- You reverse more than seven metres from the vehicle in front during the reverse park section of the test.

## **18. FAILING TO MAINTAIN A SAFE FOLLOWING DISTANCE**

You will fail if you follow too closely to the vehicle in front.

## **19. FREQUENTLY NOT PERFORMING OBSERVATION CHECKS**

You will incur this fail item if you repeatedly miss observation checks when required. Specifically this fail item applies to checking your blind spots when you:

- Leave or return to the kerb.
- Merge, diverge or change lanes.
- Are about to reverse, such as in a reverse parallel park and 3 point turn.
- Turn at intersections, leave or join the road.
- Cross lanes within a roundabout on exiting.

You must turn your head and check it is safe to proceed when moving off after being stopped at traffic lights and railway level crossings.

## **Immediate fail**

---

In most circumstances, even if you commit a fail item, your test will continue and you will be given a full assessment of your performance. In some circumstances the testing officer may record an IMMEDIATE FAIL. You will not be permitted to finish the test and the testing officer may drive you back to the service centre.

An immediate fail may occur if:

- You do anything which is unsafe or dangerous and there is an obvious danger to the public.
- You refuse to cooperate with the testing officer and so cannot be given a proper test.

## Test termination

---

While IMMEDIATE FAIL criteria applies to issues concerning driving ability, Termination criteria applies to situations not concerned with the applicant's driving performance.

Your test will be terminated if any of the unsatisfactory items below cannot be rectified at the time of the test:

### 1. The testing vehicle

- is not suitable for safe use
- indicator lights (including side repeaters) or brake lights do not operate, are incomplete, dirty or discoloured.
- tyres are not in a satisfactory condition.
- is not registered.
- windscreen cracked or broken so as to obscure driver's and/or testing officer's vision, (not including minor cracks).
- has a complying (approved and in working condition) lap/sash seat belt is not fitted for the testing officer.
- head restraints are not fitted (vehicle manufactured after 1 January 1972).
- is not suitable for class of licence.
- is not suitable for type of disability.
- has sharp edges caused by body damage.
- has any mirror broken or damaged to the extent that it distorts vision.
- has any wheel rim excessively damaged.
- has any visible wheel nuts missing.
- has any excessive under body fluid leaks.
- dual brake (if fitted) IS operational.
- dual accelerator (if fitted) is NOT operational (dual accelerator must be secured out of reach or rendered inoperable).
- front passenger door handle (either inside or outside), or window handle, is missing or inoperative.
- does not have solid front doors (cloth or fabric doors are not acceptable).
- is a convertible or Targa top and the roof is not capable of being covered in, at the request of the testing officer or in the event of bad weather.

2. The testing vehicle is unsuitable for the class of licence test.  
Note: This includes a vehicle which contains equipment that can record any aspect of the driving test including, visual images, sounds or the vehicle's position.
3. The testing vehicle is not suitable for the type of disability.
4. The testing vehicle breaks down during the test, or a large number of assessments are missed while off the test course.
5. The applicant demonstrates unacceptable, inappropriate or unlawful behaviours. Including:
  - a) A bribe or inducement is offered, or any other form of corrupt conduct is suggested
  - b) Extreme emotional pleas, threats or sexual advances in an attempt to influence a test result (a warning may be given if required)
  - c) Repeated and persistent requests to ignore an error.  
(A warning may be given if required.)
  - d) Threatening, abusive, aggressive or violent behaviours.
6. The driver is, or is suspected to be, under the influence of drugs or alcohol.
7. A crash occurs during the test, regardless of who is at fault.
8. The applicant is ill, to the extent that they may not be able to drive safely.
9. Weather conditions are bad and make the driving task too demanding.  
If the test is terminated the test fee may not be refunded.
10. *Learner driver log book* or *Digital learner driver log book app* not complete or submitted in accordance with requirements.

You must secure any loose objects in the vehicle that may interfere with vehicle control or cause injury during hard braking.

You can book and pay for licence tests at [service.nsw.gov.au](http://service.nsw.gov.au)

## What happens after the test?

---

When you return to the service centre the testing officer will ask you to wait inside while your result is calculated. Your testing officer will call you to the counter to tell you your result.

If you do not pass you will be given a test report that shows your score and where you need to improve. Your testing officer will discuss this briefly with you. Testing officers will only provide general comments and are not permitted to discuss specific situations or events. Remember, testing officers are not driving instructors and it is not their job to give you a driving lesson.

Transport for NSW tries to make sure that your test will be conducted fairly and courteously. If you are genuinely not satisfied with the way the test was conducted after you get the results, please contact the manager at the service centre where you took the test. The manager will look into your complaint and discuss the matter with you.

So if you passed, you will need to pay for your P1 licence. Congratulations and safe driving!

If you did not pass, try again when you are ready.

Regardless of whether you pass or fail the driving test, it is best to allow your supervising driver to take over the driving when you leave the service centre. This is because after taking the test many learners find it hard to concentrate on driving because they are either elated or disappointed by the result.

# Test score sheet

## Class C Car Driving Test



Test started  Applicant's signature

24 hour time

Test vehicle plate no.  Name of driving instructor

State  Name of driving school

DI Licence number  Driving school number

Instructor's vehicle  Other vehicle  Automatic  Manual

**Termination**  
 1  2  3  4  5  6  7  8  9  10

Test not conducted/terminated/  
 immediate fail because:  Manager verifying reason

F	IF	Fail and immediate Fail items
<input type="checkbox"/>	<input type="checkbox"/>	1. Disobeying traffic signs, signals or road markings.
<input type="checkbox"/>	<input type="checkbox"/>	2. Failing to give way when necessary.
<input type="checkbox"/>	<input type="checkbox"/>	3. Colliding with a vehicle, pedestrian or object.
<input type="checkbox"/>	<input type="checkbox"/>	4. Performing an illegal act or manoeuvre.
<input type="checkbox"/>	<input type="checkbox"/>	5. Exceeding the speed limit.
<input type="checkbox"/>	<input type="checkbox"/>	6. Action requiring testing officer intervention.
<input type="checkbox"/>	<input type="checkbox"/>	7. Causing a dangerous situation.
<input type="checkbox"/>	<input type="checkbox"/>	8. Failing to maintain proper control of the vehicle.
<input type="checkbox"/>	<input type="checkbox"/>	9. Failing to exercise due care to avoid an accident.
<input type="checkbox"/>	<input type="checkbox"/>	10. Failing to give way to an emergency vehicle.
<input type="checkbox"/>	<input type="checkbox"/>	11. Disobeying directions from a person controlling traffic.
<input type="checkbox"/>	<input type="checkbox"/>	12. Frequently not signalling intention. TOTAL <input type="text"/>
<input type="checkbox"/>	<input type="checkbox"/>	13. Refusing to attempt any part of the test.
<input type="checkbox"/>	<input type="checkbox"/>	14. Repeated or deliberate failure to follow directions.
<input type="checkbox"/>	<input type="checkbox"/>	15. Unreasonably obstructing other vehicles or pedestrians.
<input type="checkbox"/>	<input type="checkbox"/>	16. Receiving external advice or instruction during the test.
<input type="checkbox"/>	<input type="checkbox"/>	17. Not parking to the required standard.
<input type="checkbox"/>	<input type="checkbox"/>	18. Failing to maintain a safe following distance.
<input type="checkbox"/>	<input type="checkbox"/>	19. Frequently not making required observation checks. TOTAL <input type="text"/>

Assessments							NOTES
S	P	D	Z	H	R	C	
S	P	D	1	H	R	C	
S	P	D	2	H	R	C	
S	P	D	3	H	R	C	
S	P	D	4	H	R	C	
S	P	D	5	H	R	C	
S	P	D	6	H	R	C	
S	P	D	7	H	R	C	
S	P	D	8	H	R	C	
S	P	D	9	H	R	C	
S	P	D	10	H	R	C	
S	P	D	11	H	R	C	
S	P	D	12	H	R	C	
S	P	D	13	H	R	C	
S	P	D	14	H	R	C	
S	P	D	15	H	R	C	
S	P	D	16	H	R	C	
S	P	D	17	H	R	C	
S	P	D	18	H	R	C	
S	P	D	19	H	R	C	
S	P	D	20	H	R	C	
S	P	D	21	H	R	C	
S	P	D	22	H	R	C	
S	P	D	23	H	R	C	
S	P	D	24	H	R	C	
S	P	D	25	H	R	C	
			YES				
			NO				
25	25	25				25	
<b>Totals</b>							

My result has been explained to me  
 Applicant's signature  Date

day / month / year

**Results**  
 PASS  FAIL  Number of FAIL items

OFFICE USE ONLY  
 Test finished

24 hour time

I certify that I have tested the applicant in accordance with Transport for NSW procedures.  
 CSRDT's signature

PERCENTAGE RANGE

45071250 (11/20) Form 1408

## TEST FEEDBACK (REVERSE OF SCORE SHEET)

A “CIRCLE” in the assessment column indicates that further practice is necessary.

**Speed management (S):** (refer pages 9 to 11 of the *Guide to the Driving Test*).

The driver demonstrates their ability to manage speed and maintain a crash avoidance space.

1. Maintains space to the front:
  - with a gap of at least 3 seconds when following another vehicle and increases the gap in poor conditions
  - when stationary behind another vehicle
2. Reduces speed:
  - when vision is limited (eg, blind crests and curves)
  - when space to the side is limited
3. Maintains traffic flow:
  - when traffic, weather and road conditions allow

**Road Positioning (P):** (refer pages 12 to 19 of the *Guide to the Driving Test*).

The driver demonstrates their ability to position the vehicle by selecting a safe and legal path of travel.

1. Buffering by:
  - maintaining space from parked and oncoming vehicles
  - moving left on crests and curves
  - avoiding driving in the blind spots of other vehicles
2. Intersections:
  - are approached and exited in a safe and legal manner
3. Manoeuvres:
  - parks at required angle, close to the kerb (including start of three-point turn)
  - maintains sufficient distance (between one and two metres) from other vehicles

**Decision making (D):** (refer pages 6 to 8 and 20 to 21 of the *Guide to the Driving Test*).

The driver demonstrates the ability to select a safe and legal gap.

1. When joining the traffic flow, lane changing, merging, diverging and manoeuvring:
  - chooses a safe and legal gap at intersections, leaving the kerb, changing lanes and merging
2. When crossing the traffic flow:
  - clears the intersection 3 seconds before another vehicle arrives.

The driver performs the necessary observation checks.

1. When joining the traffic flow, lane changing, merging, diverging, manoeuvring and proceeding through traffic lights.

**Hazards (H):** (refer pages 22 and 25 of the *Guide to the Driving Test*).

Hazards were present and capable of moving into the path of the applicant's vehicle.

**Responding to Hazards (R):** (refer pages 22 to 25 of the *Guide to the Driving Test*).

The driver demonstrates their ability to protect their crash avoidance space by responding to hazards with one, or a combination of, the following actions.

1. Responds by managing speed, ‘sets up’ or ‘covers’ brakes, slowing down
2. Responds by managing position, buffers away from hazard

**Vehicle Control (C):** (refer pages 26 and 27 of the *Guide to the Driving Test*).

The driver demonstrates the ability to maintain smooth control of the vehicle by correct seat adjustment, use of the accelerator, brakes, clutch, gears, steering, auxiliary controls and signals.

**Codes in ‘NOTES’ column:**

- (K) Kerb side stop: page 17
- (M) Manoeuvre: pages 17 to 19
- (H) Observation error (Fail Item 19) : pages 6, 7, 19 & 32
- (F) Fail Items: pages 28-32
- (I) Termination: pages 33-34

**Control Errors:**

- (A) Applicant posture, seat belt: page 27
- (B) Brake, clutch, gears, accelerator: page 26
- (C) Course, steering: page 26
- (D) Dashboard controls, instruments, gauges, etc:
- (E) page 26
- (S) Signal error (Fail Item 12): page 31

# Tips for new provisional drivers

The crash rate of learner drivers is actually very low, partly due to the guidance provided by the supervising driver. However, as a newly licensed provisional driver driving without this supervision, the risk of crashing is significantly greater.

By imposing your own constraints and gaining support when needed you can reduce some of the risks involved.

## Night driving

---

Crash data shows that the risk of provisional drivers crashing is greater at night, particularly on Thursday, Friday and Saturday nights. Avoid driving at these times if at all possible.

## Passenger influences

---

A relative or trusted friend can be very helpful in new and challenging driving situations. However, some passengers can distract you and make it harder to focus on driving. For the first 12 months of provisional driving limit yourself to a maximum of one passenger.

All provisional P1 drivers under 25 years old have a passenger limit between 11pm and 5am.

## Driving distractions

---

Distractions like adjusting a CD player or radio can divide your concentration and result in a crash. If you have a passenger, get them to do the task. If you are by yourself, wait until you are stopped before you divert your attention to these activities. If you wish to use a mobile phone you must pull over to the side of the road and turn the engine off.

As a provisional driver you are still limited to zero alcohol. If you have had any drink or food containing alcohol you cannot drive.



## LICENCE RESTRICTIONS FOR P1 LICENCES

Automatic vehicles	You are restricted to driving an automatic transmission vehicle if tested in one.
Blood Alcohol Concentration (BAC)	Your BAC must be zero. This means you cannot have any alcohol in your system when you drive a vehicle.
Demerit points	Your licence will be suspended if you incur 4 or more points.
Display of P signs	P signs (red P on a white background) must be clearly displayed on the front and back of the exterior of the vehicle.
Licence class	You cannot learn to drive for a higher class licence.
Mobile phone	You must not use any function of a mobile phone, including loudspeaker devices when driving.
Passengers	P1 drivers under 25 years of age are restricted to carrying one passenger under 21 years of age between 11pm and 5am.
Seatbelts	You must ensure all occupants are properly seated and restrained by seatbelts or approved restraints.
Speed limit	You must not drive faster than 90 km/h and must observe the speed limit where it is below 90 km/h. Your licence will be suspended for at least three months for any speeding offence.
Supervising a learner	You must not supervise a learner driver.
Towing	You can tow light trailers that weigh up to 250kg when empty.
Vehicles	<p>You must not drive high-performance cars, such as those:</p> <ul style="list-style-type: none"><li>• with a power to mass ratio greater than 130 kilowatts per tonne</li><li>• with significant modifications made to the vehicle's engine</li><li>• that are listed as a banned high-performance vehicle.</li></ul> <p>See the full list of Banned high-performance cars at <a href="http://roads-maritime.transport.nsw.gov.au">roads-maritime.transport.nsw.gov.au</a> Exemptions may apply.</p>

## LICENCE RESTRICTIONS FOR P2 LICENCES

---

Blood Alcohol Concentration (BAC)	Your BAC must be zero. This means you cannot have any alcohol in your system when you drive a vehicle.
Demerit points	Your licence will be suspended if you incur 7 or more points. Any P2 driver receiving a suspension for unsafe driving behaviour must stay on their licence for an extra six months for every suspension they receive.
Display of P signs	P signs (green P on a white background) must be clearly displayed on the exterior of the front and back of the vehicle.
Mobile phone	You must not use any function of a mobile phone, including loudspeaker devices when driving.
Seatbelts	You must ensure all occupants are properly seated and restrained by seatbelts or approved restraints.
Speed limit	You must not drive faster than 100 km/h and must observe the speed limit where it is below 100 km/h. P2 licence holders caught speeding will receive a minimum of four demerit points.
Supervising a learner	You must not supervise a learner driver.
Vehicles	<p>You must not drive high-performance cars, such as those:</p> <ul style="list-style-type: none"><li>• with a power to mass ratio greater than 130 kilowatts per tonne</li><li>• with significant modifications made to the vehicle's engine</li><li>• that are listed as a banned high-performance vehicle.</li></ul> <p>See the full list of Banned high-performance cars at <a href="http://roads-maritime.transport.nsw.gov.au">roads-maritime.transport.nsw.gov.au</a> Exemptions may apply.</p>

---



**roads-maritime.transport.nsw.gov.au**

**13 22 13**

**Disclaimer**

While all care is taken in producing this work, no responsibility is taken or warranty made with respect to the accuracy of any information, data or representation. This work is not intended to substitute a reader's reference to relevant laws and Transport for NSW expressly disclaims all liability in respect of the consequences of reliance on the contents of this work.

**© Transport for New South Wales (2021)**

Users are welcome to copy, reproduce and distribute extracts from this work for non-commercial purposes only, provided Transport for NSW is acknowledged as the copyright owner and the title of this work is referenced as the source.

ISBN 978-1-877070-15-0

Pub. 07.047

Catalogue number 45071261

02/21